

# RAY MINI

07-Apr.-2017

## 1.0

PAR16 max. 15W | GU10 | 100-240VAC | 50-60Hz

CE IP20 0.9m

white texture	300220W0
aluminium brushed	300220L0
copper	300220P0
black texture	300220B0

OPTIONAL  
for PAR16 lamps see our catalogue

## 2.0

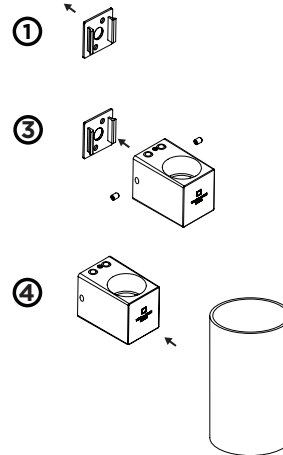
2xPAR16 max. 15W | GU10 | 100-240VAC | 50-60Hz

CE IP20 0.9m

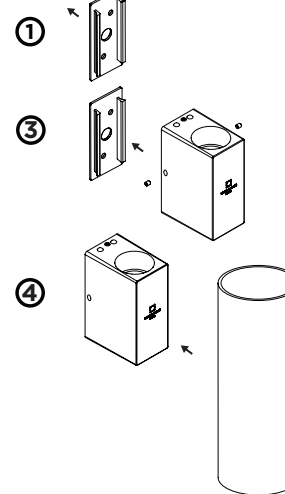
white texture	301220W0
aluminium brushed	301220L0
copper	301220P0
black texture	301220B0

OPTIONAL  
for PAR16 lamps see our catalogue

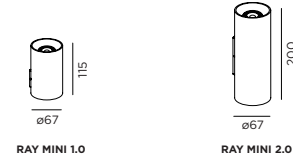
RAY MINI 1.0



RAY MINI 2.0



## DIMENSIONS



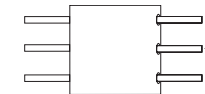
## MOUNTING INSTRUCTION

- 1 Mount the base plate on the wall

## POWER CONNECTION

- 2 Connect the power supply.

Interior: STANDARD version



- 3 Mount inset on the back plate with side screws

- 4 Click cover over the inset

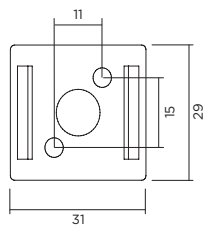
\* For optional locking, unscrew the grub screw app. 3mm. The cover is now stable.

- 5 Mount the bulb.

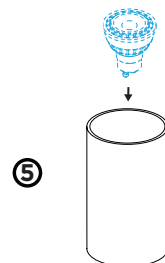
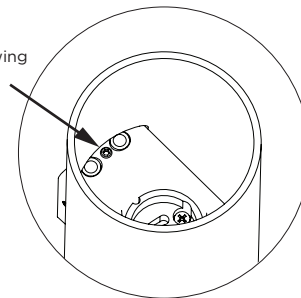
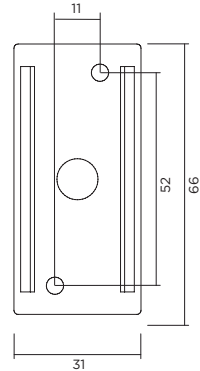
## FOR OPTIONAL LOCKING:

\* Lock the cover by unscrewing the grub screw app. 3mm. Then the cover is stable.

RAY MINI 1.0



RAY MINI 2.0



5



WEVER & DUCRÉ  
LIGHTING

[www.weverducre.com](http://www.weverducre.com)

Wever & Ducre bvba Kwadestraat 153 bus 2.1 8800 Roeselare

INSTALLATION  
INSTRUCTIONS